



WELCOME TO GLASSBOND (NW) LTD



Company Overview

The logo for GLASSBOND, featuring the word "GLASSBOND" in a bold, black, sans-serif font centered within a solid red rectangular background.

Organic lamp capping adhesives for the lighting industry



Thermoset moulding compounds for the lawn bowl market

The logo for GLASSBOND SAUERISEN, featuring the word "GLASSBOND" in a bold, black, sans-serif font centered within a red rectangular background.The logo for SAUERISEN, featuring the word "SAUERISEN" in a bold, white, sans-serif font centered within a black rectangular background.

High temperature ceramic adhesives manufactured under licence from Sauereisen USA

Company Timeline



- ∅ 1978 Company founded to manufacture Lamp Capping Adhesives
- ∅ 1982 Company moves premises to existing location – Jackson Street, St Helens
- ∅ 1982 Company installs speciality Moulding Compounds Facility
- ∅ 1987 Sales of Lamp Capping Adhesive peak in the UK
- ∅ 1992 Glassbond achieves quality accreditation to BS5750
- ∅ 1997 An agreement is reached with Sauereisen Inc USA for Glassbond (NW) Ltd. to manufacture and distribute inorganic high temperature cement in Europe
- ∅ 2001 Company is awarded the Queens award for Enterprise in recognition of its outstanding record in international sales
- ∅ 2002 Quality accreditation to ISO 9001:2000
- ∅ 2004 Environmental accreditation to ISO 14001:1996
- ∅ 2017 Accreditation obtained to ISO 9001:2015 and ISO 14001:2015
- ∅ 2018 Glassbond celebrates 40 years trading
- ∅ 2023 Glassbond becomes a member of Ceramics UK
- ∅ 2024 Glassbond joins the Liverpool Chamber of Commerce

The Company Today

Ø 27 employees

- Ø 12 office-based
- Ø 12 factory-based
- Ø 3 lab-based

Ø Plant capacities:

- Ø Lamp Capping Cements 3000MT/annum
- Ø Moulding Compounds 700MT/annum
- Ø High Temperature Cements 300MT/annum

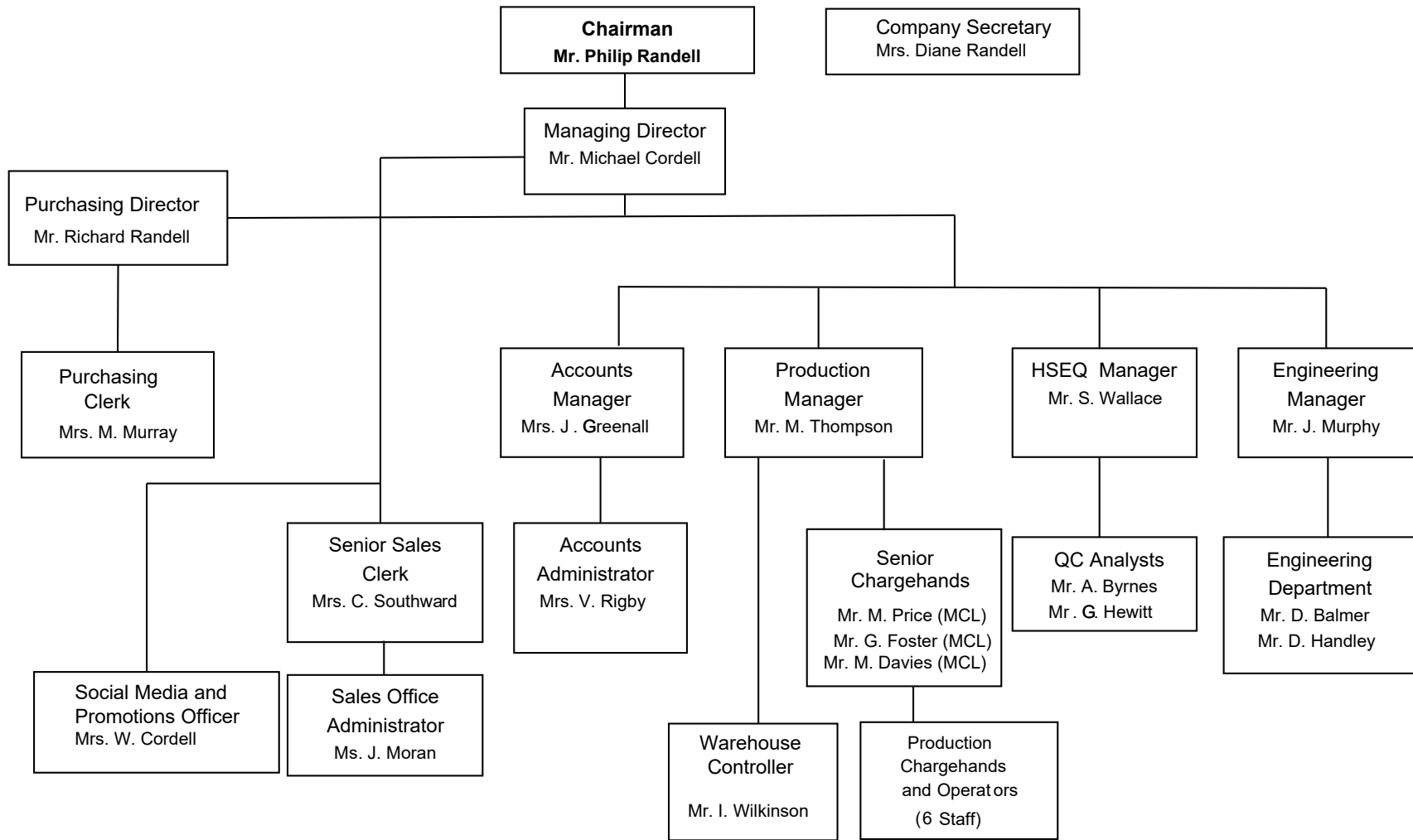
Ø Sales Markets:

- Ø 75 – 80% is exported to Europe, Asia, USA and Australia
- Ø 20 – 25% is UK-based

Ø Premises:

- Ø 9 x 2500 Sq Ft industrial units, housing manufacturing, office, warehousing and laboratory facilities

Company Structure





Lamp Capping Adhesives

- ∅ Organic adhesives based on phenolic and silicone resins for use in the manufacture of electric light bulbs and lamps
- ∅ They incorporate natural and synthetic binders, fillers and bonding agents
- ∅ Bespoke grades are possible for individual customer requirements such as lamp type, local environment and operating conditions
- ∅ Products are blended in large capacity ribbon blade blending machines and packed to customer requirements in a dedicated manufacturing facility
- ∅ New range of adhesives for the LED market have been commercialised – aimed for low working temperature lamps with sensitive electronics

Moulding Compounds

- ∅ Thermoset moulding materials based either on phenolic or melamine resin
- ∅ Primarily tailored for the lawn bowl market but they can be tailored to other applications
- ∅ Formulations are based on resin binders incorporating a range of reinforcing and enhancing fillers, pigments and curing agents
- ∅ Products are manufactured on one of two dedicated rolling mills
- ∅ Large quantity of colours available either as individual 'solid' colours or combinations of colours to form bespoke 'speckle blends'
- ∅ Dedicated blending facility on site to produce a vast array of colour combinations
- ∅ New fluorescent range of colours jointly developed and commercialised by the technical and production teams in 2019



- ∅ A blend of coarse resin, flours, lubricants, pigments and fillers is screw-fed onto a hot mill at around 110°C
- ∅ The resin mixture is partially crosslinked on the mill before being ground by two separate machines
- ∅ The powdered product is packaged and sold to customers



High Temperature Ceramic Adhesives

- ∅ Manufactured under licence from Sauereisen Inc. USA
- ∅ Can be used for bonding ceramic, metal and glass in the electrical, mechanical, metallurgical markets
- ∅ Some are capable of withstanding temperatures up to 1649°C (3000°F) making them ideal for the most challenging assembly, encapsulation and sealing applications
- ∅ Products are supplied in powder form or as ready mixed pastes



Applications for High Temperature Cements Include



Thermocouples



Igniter Bases

Other applications include furnace repairs, HEPA filter manufacture, lighting, resistors and heating elements

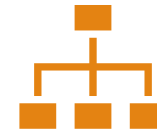
More recently customers have used these products in 3D printing and cast iron stove repairs



Dedicated team of four personnel working within the quality/R&D/technical departments



Certified and accredited to current international standards for both quality (ISO 9001:2015) and environmental aspects (ISO 14001:2015)



All site operations are managed within a QMS/EMS framework covering items such as:

- Control of quality systems/records
- Internal quality audits
- Quarantine of products not suitable for use/resale
- Management of complaints
- Product non-conformity
- Corrective action
- Introduction of new products

Quality at Glassbond



Glassbond (NW) Ltd, West Side Industrial Estate
Jackson Street, St Helens, Merseyside, WA9 3AT England
Tel: +44 (0) 1744 730 334
Email: info@glassbond.co.uk Web: www.glassbond.co.uk

